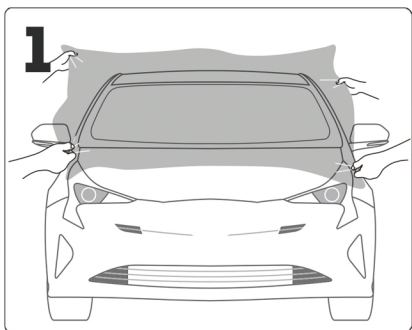




WinCrest Install Guide

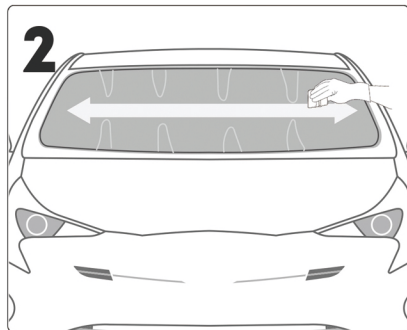


DO NOT REMOVE ANY LAYERS UNTIL INSTRUCTED!



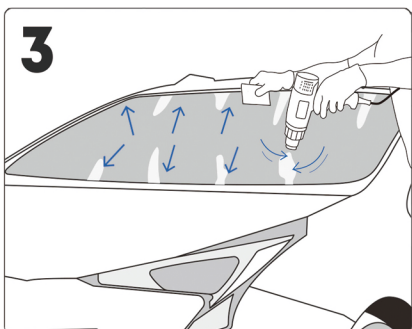
Clean windshield & Spray windshield & Cut film

- 1 Clean your windshield thoroughly
- 2 Spray water on the windshield
- 3 Cut the appropriate size for the windshield



Squeegee & Make fingers

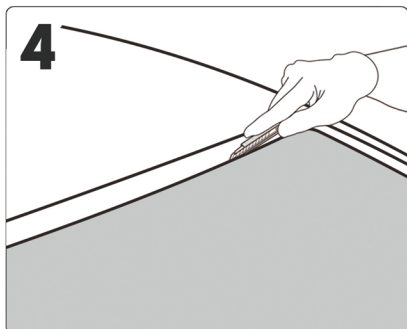
- 1 Remove the moisture by using the squeegee
- 2 Make fingers natural to the curvature of the windshield



Shrink & Mold

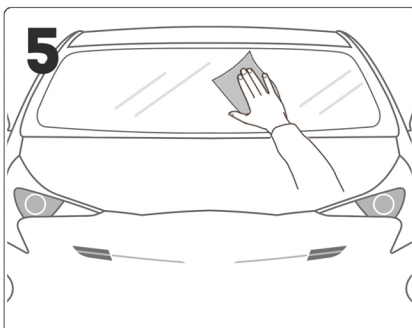
Using the recommended heat 270°C-320°C (518°F-608°F), heat shrink the film with a heat gun in a steady motion back and forth to mold the protection film. (Open the side windows during this step, so that heat is not trapped in the car)

*Both, wet & dry molding are possible.



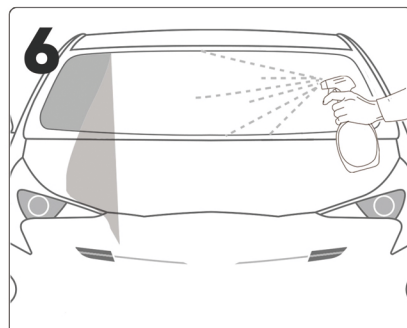
Cut off any excess film leaving gap

Recommended gap is 3mm



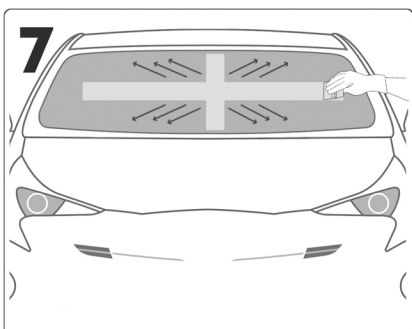
Remove film & Clean thoroughly

- 1 Remove the film from the windshield
- 2 Clean the windshield thoroughly to remove dust and contaminants that have stuck during the process of cutting and molding



Remove adhesive liner & Spray the adhesive and the windshield with slip solution

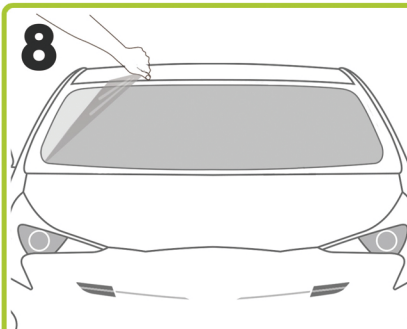
- 1 Peel off the adhesive liner (under liner)
- 2 Spray the adhesive and windshield side of the film in order to apply to windshield



Reapply film & Squeegee

- 1 Reapply the film
- 2 Remove the slip solution and air bubbles using the squeegee, as shown in the picture
- 3 Move from center out
(Do not worry about the tiny water humps, they will go away)

★ VERY IMPORTANT!



Remove the top coat liner

- 1 Remove the outer liner of the ULTRAFIT WinCrest Protection Film
- 2 Re-confirm that the edges of the film are dry and fixed

After several hours, re-inspect the edges again for quality install.

It is important to avoid extreme weather conditions and limit excessive driving. Requires 72 hours for the adhesive to harden.

After completion of installation, we encourage that you switch out your wiper blades for the best results. For wiper blades that have been used for more than 1000km(621 Miles), please replace them right away.